



THE JEWISH FEDERATION OF GREATER PHILADELPHIA LOVES ISRAEL



jewishphilly.org/israel



Aspire to embody “a light unto the nations.”



Israel has been a priority for the Jewish Federation of Greater Philadelphia since our 1901 founding — back when the State of Israel was merely a hopeful dream. As an organization determined to see Jewish life continue to thrive, Israel holds a special place in our hearts. We take pride and comfort in its very existence; take joy in its spiritual and cultural riches; and draw inspiration from its goal to become David Ben-Gurion’s vision of *Or L’goyim*, “a light unto the nations,” a beacon of morality, harmony and tolerance.

Israel is our homeland, and as such, its success as a nation is a success for all Jewish people. Recognizing the importance of Israel to each and every one of us, the Jewish Federation strives to help connect our Greater Philadelphia communities with Israel. Through our close partnership, we learn and grow together. We help each other in challenging times and rejoice together in moments of celebration. Each of our Israel initiatives is designed to encourage engagement, build cultural bonds, advocate for peace and security, and provide for those in need.

After more than a century of commitment to Israel, we remain dedicated to helping it continue to evolve as a vibrant, inclusive and resilient society.

Giving our All to All of Israel

As in Philadelphia, for our efforts in Israel we partner with international agencies and Israeli organizations in order to be well-informed and effective. Whether in Philadelphia, Israel, or around the world, we make the greatest impact on the most people by concentrating on our values.




SERVE VULNERABLE POPULATIONS

We enhance quality of life in Israel by ensuring that under-served populations have access to critical resources.

Early support and intervention programs helped

92,000

children overcome cycles of poverty and abuse



34,195

people with disabilities were impacted through innovative programing

ADVOCACY

In the United States and in Israel, we advocate for Israel's right to exist and prosper in peace, including preserving its academic, cultural and economic freedoms. To continue promoting understanding and build bridges, we foster conversation with interfaith communities.

MOBILIZE COMMUNITIES IN TIMES OF CRISIS

When communities urgently need our assistance, we are there. Our partnerships with the Jewish Agency for Israel and the JDC provide relief after natural disasters, and support victims of terrorism.

26,000

older adults benefited from critical services



20,000

immigrants were served by absorption initiatives

SUPPORT JEWISH LIFE AND LEARNING

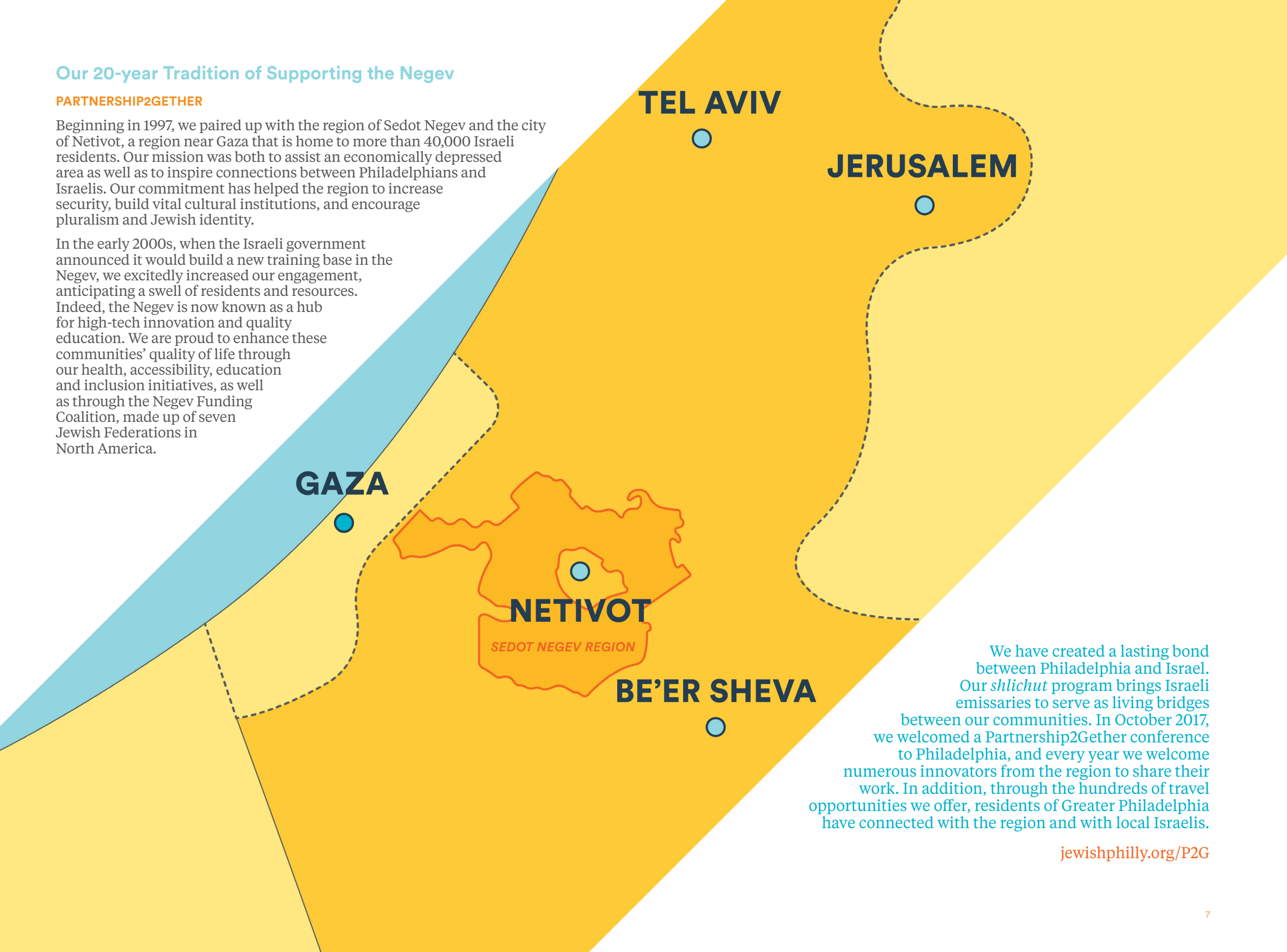
With a focus on disadvantaged students, we help more children succeed in school, preparing them to become the next generation of global Jewish leaders.

Our 20-year Tradition of Supporting the Negev

PARTNERSHIP2GETHER

Beginning in 1997, we paired up with the region of Sedot Negev and the city of Netivot, a region near Gaza that is home to more than 40,000 Israeli residents. Our mission was both to assist an economically depressed area as well as to inspire connections between Philadelphians and Israelis. Our commitment has helped the region to increase security, build vital cultural institutions, and encourage pluralism and Jewish identity.

In the early 2000s, when the Israeli government announced it would build a new training base in the Negev, we excitedly increased our engagement, anticipating a swell of residents and resources. Indeed, the Negev is now known as a hub for high-tech innovation and quality education. We are proud to enhance these communities' quality of life through our health, accessibility, education and inclusion initiatives, as well as through the Negev Funding Coalition, made up of seven Jewish Federations in North America.



We have created a lasting bond between Philadelphia and Israel. Our *shlichut* program brings Israeli emissaries to serve as living bridges between our communities. In October 2017, we welcomed a Partnership2Gether conference to Philadelphia, and every year we welcome numerous innovators from the region to share their work. In addition, through the hundreds of travel opportunities we offer, residents of Greater Philadelphia have connected with the region and with local Israelis.

jewishphilly.org/P2G

A photograph of three women sitting on the ground outdoors, engaged in planting aloe vera. The woman in the center, wearing glasses and a grey cardigan, is focused on a large aloe vera plant. To her left, a woman in a blue and white striped sweater is also working with the plant. To her right, a woman in a pink and brown striped sweater is handling soil. They are using clear plastic cups as pots. The background shows a rustic outdoor setting with wooden pallets and other people standing. The image is decorated with small, colorful diamond-shaped graphics in the upper corners.

Every step of the way
we've proudly helped
Israel to flourish and thrive.



“A Jew is a Jew is a Jew,
and it doesn't matter
what kippah he wears
or does not wear and
what stream he
belongs to — we
are one people.”

- Isaac Herzog,
Chairman of the Jewish Agency for Israel

Our Commitment to Inclusion in Israel

We welcome, support and celebrate the breadth of today's Jewish identities and beliefs, knowing that each contributes to the continued flourishing of global Judaism. No matter the specifics of our religious practice, every Jewish person stands as equal. In our support of Israeli initiatives, we work to spread respect for diverse expressions of Judaism, strengthen Israel's relationships with North American Jewry and advocate for the equality of all streams of Judaism in Israel.

We are also committed to ensuring all Israelis can participate and thrive in the country they love, regardless of their religion, race or ethnicity. **By focusing on Israel's most vulnerable members, our work and partnerships help build supportive communities within an inclusive Israeli society.**

Exploring Traditions through Travel to Israel

Through our immersive travel opportunities, residents of Greater Philadelphia, young and old, have life-changing experiences and forge lasting bonds with Israel.

UPCOMING ISRAEL TRAVEL OPPORTUNITIES

2019 Men's Mission | April 6-11, 2019

This elite men's mission to Israel introduces distinguished men to Israeli leaders in technology, business and military sectors.

2019 Israel360 | June 30-July 8, 2019

Join community members aged 27-40 years old to connect with Israel, the Jewish Federation of Greater Philadelphia and our local Jewish communities.

2019 Joshua Society Culinary Mission | September 14-22, 2019

Members of the Joshua Society (households generously giving \$10,000+ annually) are invited to travel together on a culinary mission that will connect members of our Greater Philadelphia communities to Israel through the lens of food.

Couples Mission | October 26-November 3, 2019

This high-end couples trip is open to alumni of our men's missions, their spouses and their friends.

Families Mission | December 19-26, 2019 (with extension)

Carrie and Matt Pestronk will chair this fun-filled mission to Israel Israel, an adventure for every generation.

Israel Innovation Mission | Winter 2020

Dean Adler will chair a mission to build awareness and create connections between entrepreneurs in Philadelphia and Israel focused on technology and urban development.

YOUTH AND YOUNG ADULT TRAVEL PROGRAMS

Israel Program Scholarship Aid Fund

Need-based scholarships for residents of Greater Philadelphia and students to assist with tuition and costs for study programs in Israel.

Morton Stein Scholarship Fund

Need-based scholarships for students, young adults and teachers to study at an Orthodox yeshiva in Israel.

Onward Israel

An eight-week internship program in participants' fields of interest, hosted in Be'er Sheva, for Philadelphians ages 19-27.

Diller Teen Fellows Program

A yearlong learning opportunity for 10th and 11th graders, building the next generation of global Jewish leaders, ending in a 3-week trip to Israel.

Honeymoon Israel

Unforgettable trips to Israel for couples early in their committed relationships.

Shorashim Birthright Israel

An opportunity for every Jew ages 22-26 to have an immersive visit to Israel alongside Israeli peers.

Masa Israel Journey

Offering over 200 study, internship and volunteer opportunities to help engage adults ages 18-30 in Israel.

Find out more about travelling with purpose at jewishphilly.org/missions

A woman with red hair is looking out of a large window, holding a small yellow object. The view outside shows a dense city skyline with many buildings, including a prominent blue skyscraper. The image is split diagonally, with the top right corner being white and the bottom left corner showing the woman and the city view.

For more information on upcoming events,
our engagement with Israel and more visit
jewishphilly.org

And be sure to get social with us!

   [#JewishPhilly](https://twitter.com/JewishPhilly)

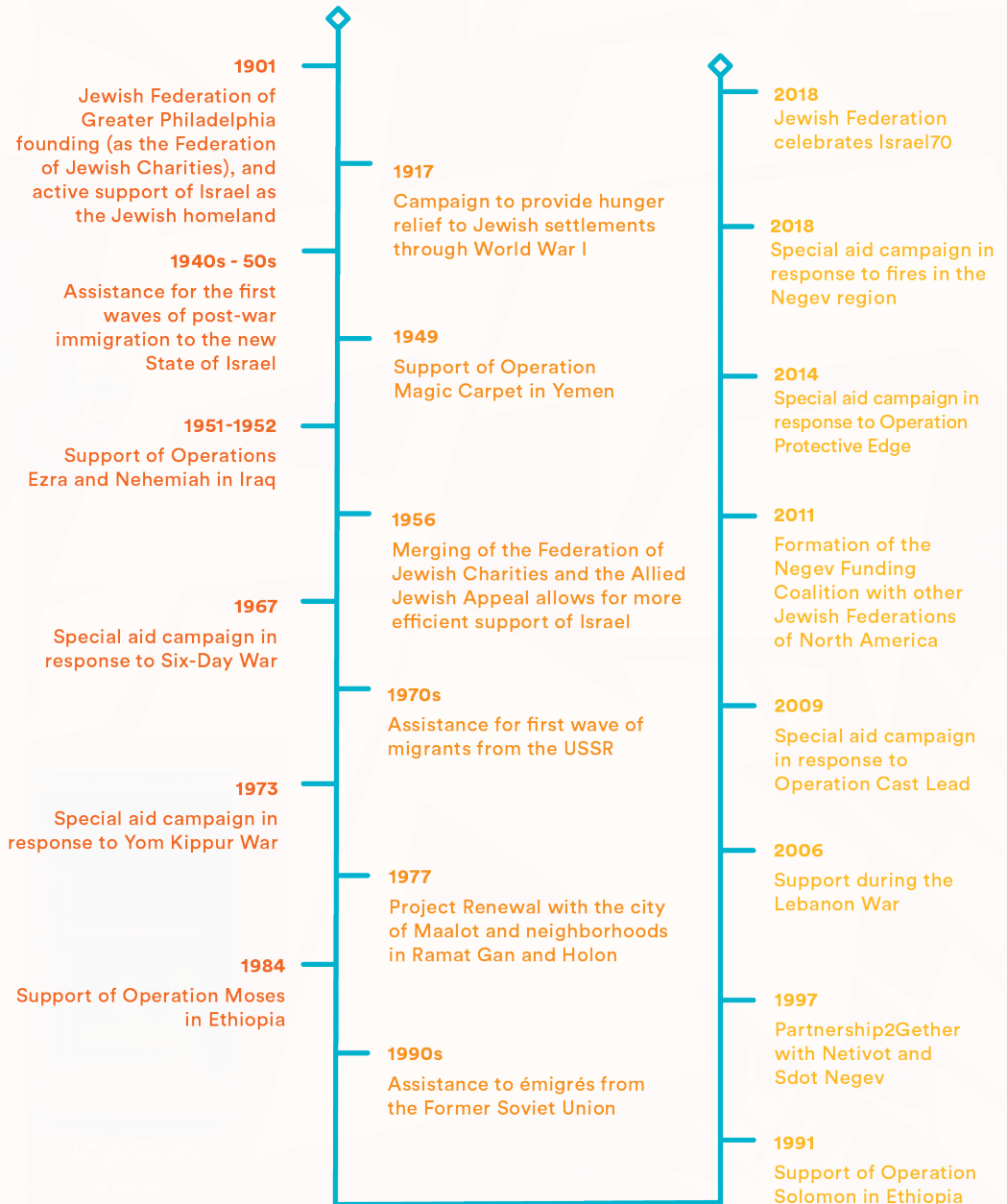
Want to know more?
Contact info@jewishphilly.org

How to Get Involved

Every year, the Jewish Federation is proud to encourage each of us to consider our singular connection to Israel while also celebrating the unity and diversity of the country and of the Jewish people through an array of Israel engagement opportunities. By bringing Israeli speakers and performers, encouraging learning and discussion, and providing grants for synagogues and other local institutions to expand their Israeli programming, we continue our long tradition of building bridges between Israel and Greater Philadelphia.

To discover the many ways you can continue to engage with Israel within our Greater Philadelphia communities, visit jewishphilly.org/israel

The History of Our Commitment to Israel



The Jewish Federation of Greater Philadelphia mobilizes financial and volunteer resources to address the communities' most critical priorities locally, in Israel and around the world.