



# Jewish Federation of Greater Philadelphia

## Mitzvah Food Program

Need Help Applying for Benefits?  
We are here to help!

- SNAP (Food Stamps)
- Medical Assistance (Medicaid)
- LIHEAP (Energy Assistance)
- Rent/Property Tax Rebate Program

We can assist you with questions about eligibility requirements, application process, as well as provide you with community resources.

To get started contact, **Natalya Gorbachik**, at **215.832.0831**

### *Documents Needed for Your Application:*

1. Proof of identity and for immigrant applicants, verification of residency status (one of the below documents for each member of your household)
  - Driver's license/Photo ID
  - Birth certificate
  - Passport
  - Visa
  - Permanent Resident Card (Green card)
2. Social Security number
3. Proof of Income
  - Pay stubs
  - Federal income tax return
  - Social Security award letter
  - Child support
4. Proof of residency and housing costs
  - Mortgage statement
  - Rent lease
  - Utility bills (gas, electric, water, phone)
5. Bank statements
6. Proof of child care costs or court-ordered child support



## Free fresh fruits and veggies for those who need them!

15 LOCATIONS IN PENNSYLVANIA AND NEW JERSEY

### PENNSYLVANIA

#### DELAWARE COUNTY

**Chester, PA**  
**Chester High School**  
232 West 9th Street, Chester, PA 19013  
Tuesdays, 12:30-1:30 PM

**Sharon Hill, PA**  
**Mount Zion CME Church**  
701 Felton Ave., Sharon Hill, PA 19079  
Wednesdays, 1:30-2:30 PM

#### MONTGOMERY COUNTY

**Souderton, PA**  
**Grace Bible Church**  
423 N Main St, Souderton, PA 18964  
Tuesdays, 1:00-2:00 PM

#### BUCKS COUNTY

**Warminster, PA\***  
**Warminster Community Park**  
1100 Veterans Way, Warminster, PA 18974  
Tuesdays, 12:00-1:00 PM

**Ottsville, PA\***  
At the intersection of 611 and 412 Ottsville PA,  
18942  
Thursdays, 11 AM-12 PM

**Bristol, PA\***  
**Bucks County Community College**  
1304 Veteran Highway, Bristol, PA 19007  
Fridays, 12-1 PM

#### PHILADELPHIA

**Philadelphia, PA**  
**Murrell Dobbins Career & Technical Education HS**  
2150 W Lehigh Ave. Philadelphia PA 19132  
Wednesdays, 12:30-1:30 PM

**Philadelphia, PA**  
**Lillian Marrero Library**  
601 W. Lehigh Ave., Philadelphia, PA 19133  
Wednesdays, 12:30-1:30 PM

**Philadelphia, PA**  
**Salvation Army**  
5830 Rising Sun Avenue, Philadelphia PA, 19120  
Thursdays, 10:30-11:30 AM

**Philadelphia, PA**  
**Einstein Medical Center**  
5501 Old York Rd, Philadelphia, PA 19141  
Thursdays, 10:00 – 11:00 AM

**Upper Darby, PA**  
**Christ Lutheran Community Church**  
7240 Walnut Street, Upper Darby, PA 19082  
Fridays, 9:30-10:30 AM

**Philadelphia, PA**  
Under 95 Overpass  
Front and Tasker Street, Phila PA, 19147  
Fridays, 1:30-2:30 PM

\*For Bucks County residents only



## Free fresh fruits and veggies for those who need them!

15 LOCATIONS IN PENNSYLVANIA AND NEW JERSEY

### **NEW JERSEY**

**Glassboro, NJ – Rowan University**

Parking Lot D, corner of Joseph L Bowe Blvd.  
and Carpenter St (across from Glassboro HS)  
Fridays, 10:00-11:00 AM

**Woodbury, NJ – The Mid-Atlantic States Career  
and Education Center (MASCEC)**

28 Harrison Street, Woodbury, NJ 08096  
Thursdays, 1:30 PM-2:30 PM

**Burlington, NJ at St Katherine Church**

502 High Street, Burlington, NJ 08016  
Tuesdays, 1:30-2:30 PM

**Camden, NJ at St. John Baptist Church**

400 N. 30th Street, Camden, NJ 08105  
Tuesdays, 9:30-10:30 AM



JEWISH RELIEF AGENCY

Phone # (610) 660-0190

<https://www.jewishrelief.org/get-help.html>

Food boxes of nonperishable items  
delivered to your home once a month



COALITION AGAINST  
**HUNGER**

Find local food pantries  
in your neighborhood

215-430-0555

<http://www.hungercoalition.org/food-pantries>

# Stretch your Budget & Eat Healthier!

## Programs for Seniors



## SNAP (Food Stamp) Hotline: 215-430-0556

The Coalition Against Hunger can help over the phone with SNAP (Food Stamps) applications or problems. *Free, convenient, and confidential.*

To find food pantries near you, and learn about other food programs, call us or visit:  
[www.phillyfoodfinder.org](http://www.phillyfoodfinder.org)

### **FREE FOOD FOR SENIORS** *(please see requirements for each program)*

**Philadelphia Corporation for the Aging:** Serves meals at senior centers across Philadelphia. Delivers free meals to income-eligible seniors. Gives out farmers' market vouchers each summer. 215-765-9040, [www.pcacares.org](http://www.pcacares.org)

**Senior Boxes (Commodity Supplemental Food Program):** Income-eligible adults 60+ can pick up a free box of food each month. For locations contact the SHARE Food Program 215-223-2220 or the WhyHunger Hotline 800-548-6479.

**Jewish Relief Agency (JRA):** Delivers free boxes of kosher food once a month to residents of eligible zip codes in Philadelphia and surrounding counties, regardless of religious affiliation. 610-660-9572, [www.jewishrelief.org](http://www.jewishrelief.org)

**Aid For Friends:** Delivers free meals to isolated, homebound seniors. 215-464-2224, [www.aidforfriends.org](http://www.aidforfriends.org)

**MANNA:** Delivers free meals to people at nutritional risk due to chronic or life-threatening illnesses. 215-496-2662, [www.mannapa.org](http://www.mannapa.org)

### **MEALS ON WHEELS PROGRAMS** Deliver meals to seniors for a fee.

- **Chestnut Hill:** Delivers meals to Germantown, Chestnut Hill, parts of Springfield Township. 215-233-5555
- **Klein JCC:** Delivers kosher meals to Northeast Philadelphia, Eastern Montgomery County, Lower Bucks County, Center City & South Philadelphia. Accepts SNAP. 215-698-7300 x110
- **Homelink Inc.:** Delivers meals to Northeast, South, West & North Philadelphia. 267-682-1026
- **21st Ward:** Delivers meals to Roxborough, Manayunk & Wissahickon. 215-482-0249

(MORE PROGRAMS ON BACK)



# FOOD RESOURCES FOR SENIORS IN PHILADELPHIA



## FREE PRODUCE PROGRAMS



### **Farmers' Market Nutrition Program (June-November):**

Eligible seniors can receive \$20 in vouchers to buy local fruits and vegetables at farmers' markets and produce stands. Checks are distributed each summer and must be used by Nov. 30. Contact Philadelphia Corporation for Aging: 215-765-9040.

**Fresh for All:** Philabundance offers free produce year-round, weather permitting. Bring bags. [www.philabundance.org](http://www.philabundance.org)  
Schedule and locations include:

- Thursday 10:30am-11:30am, Houseman Recreation Center, Summerdale & Godfrey Aves., Northeast Philly
- Friday 1:30pm-2:30pm, under the 95 overpass at Front & Tasker streets, South Philly



## SAVE ON FARM FRESH FRUITS, VEGETABLES & MORE

**SHARE Food Program:** Get \$50 in groceries for \$20 plus 2 hours of community service. Seasonal farmstand, fresh produce packages and bulk groceries also available. Accepts SNAP (food stamps) and farmers' market vouchers. 215-223-2220, [www.sharefoodprogram.org](http://www.sharefoodprogram.org)

**Farm to Families:** Buy a box of farm-fresh produce worth \$20-\$30 for just \$10-\$15. Eggs, meat and fish also sold. Order one week in advance, year-round. Pay with cash, SNAP or credit card. Order and pick up from 8 locations in Philadelphia or Bucks County. Contact St. Christopher's Foundation at 215-568-1126, <http://scfchildren.org/farm-to-families-initiative>

**Double Dollars: Fair Food Farmstand** will match your SNAP purchases up to \$10 each week, with a coupon to spend on more fresh produce, poultry and other local products. Reading Terminal Market (12th and Arch streets), 215-386-5211, [www.fairfoodphilly.org](http://www.fairfoodphilly.org)

**Philly Food Bucks (May-November):** Spend \$5 in SNAP at your farmers' market, and get a \$2 Philly Food Bucks coupon to buy more produce. Most markets open May/June though October/November. For a list of markets and schedules, call 311 or visit [www.thefoodtrust.org/farmers-markets](http://www.thefoodtrust.org/farmers-markets)

## **5 SNAP FACTS**

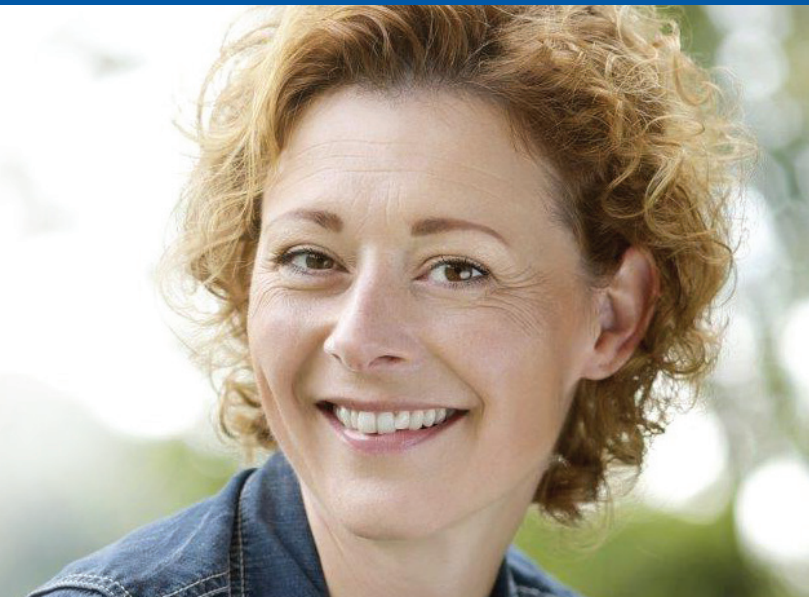
1. SNAP is now the name for food stamps, which come on an ACCESS Card that works like a debit/ATM card.
2. Use SNAP to buy food, seeds and food-bearing plants at grocery stores, corner stores, and farmers' markets.
3. The current range for SNAP benefits for one person is \$16-194 per month.
4. SNAP income guidelines change each October.
5. You can apply for SNAP over the phone, and seniors may be eligible to use a 2-page application that approves benefits for 3 years. Call 215-430-0556 to see if you qualify.





# A Guided Approach to Your Job Search

Career Strategies helps individuals of all ages find **meaningful, satisfying employment**. We empower jobseekers to **identify new opportunities** that are best suited to their **skills, abilities** and **interests**.



***Searching for a job is never easy; make the professionals at Career Strategies a key part of your winning team!***

**Services include:**

- One-on-one career counseling
- Interview preparation
- Career assessment
- Networking and skill building
- Résumé, cover letter & online profile writing
- Career workshops
- Job search & placement assistance
- Computer classes

***Now with Skype, Consult with Experts from YOUR OWN HOME!***



## Career Strategies

*Convenient Locations in Northeast and Center City Philadelphia*



Jewish Federation  
of Greater Philadelphia



**FOR MORE INFORMATION:**  
[jevshumanservices.org/careerstrategies](http://jevshumanservices.org/careerstrategies)



**215-854-1874**



**CS@jevs.org**







# Older Adult Transportation Services

**We can help you get from here to there**



When older adults give up their car or find it difficult to navigate public transportation, Jewish Family and Children's Service of Greater Philadelphia can help. Depending on an individual's location and situation, we offer a wheelchair accessible bus that provides scheduled grocery shopping trips as well as connect older adults to community based and private transportation resources to help transport older adults and enable them to live independently.

## PROVIDING TRANSPORTATION

Older members of our community use JFCS transportation services to:

**Shopping van services** to and from the grocery store on JFCS' wheelchair accessible bus as well as connect older adults to community based and private transportation resources to help transport older adults and enable them to live independently.

Transportation for clients to and from JFCS sponsored social events (Programs that may occur at The Brodsky Enrichment Center, JFCS office locations, and within the community)

**You may call 1.866.532.7669 to find out more about these services.**

# FREE CLOTHING SHOPS!

Our Closet operates **FREE pop-up shops featuring clothing and accessories for adults and children** throughout Philadelphia.

- All are welcome, **NO REFERRALS NECESSARY!**
- Most pop-ups are open from **10am-12pm**
- Tickets to shop are distributed on a **first-come, first-serve** basis once the pop-up shop opens.
- For those who choose to arrive early, please form a single-file line. Shoppers **must** be present to receive a ticket. You must have a ticket to shop.
- **5 item limit** per adult shopper (age 16 and up)
- **10 item limit** at children's and adult/children's shops
- **All items are free**, including professional/casual wear, children/infant clothing, as well as shoes, accessories and costume jewelry
- We cannot guarantee specific sizes or styles, and **inventory changes from week to week**

**IN THE CASE OF INCLEMENT WEATHER, OUR CLOSET WILL FOLLOW THE CLOSURES OF THE PHILADELPHIA SCHOOL DISTRICT. SCHOOL DELAYS WILL BE CONSIDERED CLOSURES.**

## Fall 2019 POP-UP SCHEDULE

Day	Date	Location	Address	Clothing Type
Wed	Sep 4	Dornsife Center at Drexel University	3509 Spring Garden St.	Adult & Children
Mon	Sep 9	Providence Center	2557 North 5 <sup>th</sup> St.	Adult
Wed	Sep 11	CHOP Buerger Center	3500 Civic Center Blvd.	Children
Fri	Sep 13	Lutheran Church of the Holy Communion	2111 Sansom St. (Enter on Van Pelt)	Adult
Wed	Sep 18	Philadelphia Episcopal Cathedral <b>*Special Time: 9:30am-11:30am</b>	23 South 38 <sup>th</sup> St.	Adult
Wed	Sep 25	Church of the Advocate	1801 Diamond St.	Adult
Wed	Oct 2	United Communities	2029 South 8 <sup>th</sup> St. (at Snyder Ave.)	Adult
Fri	Oct 4	Nicetown CDC <b>*NEW LOCATION</b>	4340 Germantown Ave	Adult
Mon	Oct 7	Gideon Elementary School <b>*Special Time: 4:30pm-6:30pm</b>	2817 West Glenwood Ave.	Adult & Children
Fri	Oct 11	Lutheran Church of the Holy Communion	2111 Sansom St. (Enter on Van Pelt)	Adult
Wed	Oct 16	Philadelphia Episcopal Cathedral <b>*Special Time: 9:30am-11:30am</b>	23 South 38 <sup>th</sup> St.	Adult
Mon	Oct 28	The Common Place	5736 Chester Ave. (at 58 <sup>th</sup> St.)	Adult
Wed	Oct 30	Church of the Advocate	1801 Diamond St.	Adult
Fri	Nov 1	CHOP Cobbs Creek	225 Cobbs Creek Parkway	Children
Mon	Nov 4	Gideon Elementary School <b>*Special Time: 4:30pm-6:30pm</b>	2817 West Glenwood Ave.	Adult & Children
Fri	Nov 8	Lutheran Church of the Holy Communion	2111 Sansom St. (Enter on Van Pelt)	Adult
Mon	Nov 11	Providence Center	2557 North 5 <sup>th</sup> St.	Adult
Fri	Nov 15	Immanuel Resource Center/COGIC	6401 Ogontz Ave.	Adult & Children
Wed	Nov 20	Philadelphia Episcopal Cathedral <b>*Special Time: 9:30am-11:30am</b>	23 South 38 <sup>th</sup> St.	Adult
Mon	Nov 25	The Common Place	5736 Chester Ave. (at 58 <sup>th</sup> St.)	Adult
Wed	Nov 27	Church of the Advocate	1801 Diamond St.	Adult

# FREE CLOTHING SHOPS!

Our Closet operates **FREE pop-up shops featuring clothing and accessories for adults and children** throughout Philadelphia.

- All are welcome to join us at one pop-up shop per week, **NO REFERRALS NECESSARY!**
- Most pop-ups are open from **10am-12pm** unless indicated.
- Tickets to shop are distributed on a **first-come, first-serve** basis once the pop-up shop opens.
- For those who choose to arrive early, please form a single-file line. Shoppers **must** be present to receive a ticket. You must have a ticket to shop.
- **5 item limit** per adult shopper (age 16 and up).
- **10 item limit** at children's and adult/children's shops.
- **All items are free**, including professional/casual wear, children's/infant clothing, as well as shoes, accessories and costume jewelry.
- We cannot guarantee specific sizes or styles, and **inventory changes from week to week**

**IN THE CASE OF INCLEMENT WEATHER, OUR CLOSET WILL FOLLOW THE CLOSURES OF THE PHILADELPHIA SCHOOL DISTRICT. SCHOOL DELAYS WILL BE CONSIDERED CLOSURES.**

## WINTER 2019/2020 POP-UP SCHEDULE

Day	Date	Location	Address	Clothing Type
Mon	Dec 2	Gideon Elementary School <b>*Special Time: 4:30pm-6:30pm</b>	2817 West Glenwood Ave.	Adult & Children
Wed	Dec 4	Dornsife Center at Drexel University	3509 Spring Garden St.	Adult & Children
Mon	Dec 9	Providence Center	2557 N. 5 <sup>th</sup> St. (at Huntingdon St.)	Adult
Wed	Dec 11	CHOP Buerger Center	3500 Civic Center Blvd.	Children
Fri	Dec 13	Lutheran Church of the Holy Communion	2111 Sansom St. (Enter on Van Pelt)	Adult
Mon	Dec 16	Congregation Rodeph Shalom	615 N. Broad St. (at Green St.)	Adult & Children
Wed	Dec 18	Philadelphia Episcopal Cathedral <b>*Special Time: 9:30am-11:30am</b>	23 South 38 <sup>th</sup> St.	Adult
Fri	Jan 3	Nicetown Court <b>*NEW LOCATION</b>	4332 Germantown Ave.	Adult & Children
Mon	Jan 6	Gideon Elementary School <b>*Special Time: 4:30pm-6:30pm</b>	2817 West Glenwood Ave.	Adult & Children
Fri	Jan 10	Lutheran Church of the Holy Communion	2111 Sansom St. (Enter on Van Pelt)	Adult
Mon	Jan 13	Providence Center	2557 N. 5 <sup>th</sup> St. (at Huntingdon St.)	Adult
Wed	Jan 15	Philadelphia Episcopal Cathedral <b>*Special Time: 9:30am-11:30am</b>	23 South 38 <sup>th</sup> St.	Adult
Mon	Jan 27	The Common Place	5736 Chester Ave. (at 58 <sup>th</sup> St.)	Adult
Wed	Jan 29	Church of the Advocate	1801 Diamond St.	Adult
Mon	Feb 3	Gideon Elementary School <b>*Special Time: 4:30pm-6:30pm</b>	2817 West Glenwood Ave.	Adult & Children
Wed	Feb 5	United Communities Houston Center	2029 S. 8 <sup>th</sup> St. (at Snyder Ave.)	Adult & Children
Mon	Feb 10	CHOP Karabots	4865 Market St.	Children
Fri	Feb 14	Lutheran Church of the Holy Communion	2111 Sansom St. (Enter on Van Pelt)	Adult
Wed	Feb 19	Philadelphia Episcopal Cathedral <b>*Special Time: 9:30am-11:30am</b>	23 South 38 <sup>th</sup> St.	Adult
Fri	Feb 21	Immanuel Resource Center/COGIC	6401 Ogontz Ave.	Adult & Children
Mon	Feb 24	The Common Place	5736 Chester Ave. (at 58 <sup>th</sup> St.)	Adult
Wed	Feb 26	Church of the Advocate	1801 Diamond St.	Adult

Nuestra Armario opera tiendas temporales de ropa y moda GRATIS, que incluye accesorios para adultos y niños por el entero de Filadelfia.

- Todos son bienvenidos, referencias no son necesarios!
- Más las tiendas están abiertas desde las 10am-12pm
- Los boletos para comprar se distribuyen por orden de llegada una vez que se abre la tienda emergente
- Para aquellos que eligen llegar temprano, forme una línea de archivo único. Los compradores deben estar presentes para recibir un boleto. Debe tener un boleto para comprar.
- Limite de 5 artículos por cada cliente (de edades 16+)
- Limite de 10 artículos a niños y adultos/niños tiendas
- Todos los artículos son gratis, incluyendo ropa profesional y casual, ropa de niños/infantes, pero también zapatos, accesorios, y joyería de disfraz
- No podemos garantizar tamaños específicos o estilos y el inventario cambiara de semana a seman

**EN CASO DE CLIMA INCLEMENTE, OUR CLOSET SEGUIRÁ LOS CIERRES DEL DISTRITO ESCOLAR DE PHILADELPHIA. LOS RETRASOS EN EL HORARIO ESCOLAR SE CONSIDERARAN CIERRES.**

## CALENDARIO PARA LAS TIENDAS DE INVIERNO 2019/2020

Día	Fecha	Ubicación	Dirrección	Tipo de Ropa
Lun	Dec 2	Gideon Elementary School <b>*Special Time: 4:30pm-6:30pm</b>	2817 West Glenwood Ave.	Adultos & Ninos
Mier	Dec 4	Dornsife Center at Drexel University	3509 Spring Garden St.	Adultos & Ninos
Lun	Dec 9	Providence Center	2557 N. 5 <sup>th</sup> St. (at Huntingdon St.)	Adultos
Mier	Dec 11	CHOP Buerger Center	3500 Civic Center Blvd.	Ninos
Vier	Dec 13	Lutheran Church of the Holy Communion	2111 Sansom St. (Enter on Van Pelt)	Adultos
Lun	Dec 16	Congregation Rodeph Shalom	615 N. Broad St. (at Green St.)	Adultos & Ninos
Mier	Dec 18	Philadelphia Episcopal Cathedral <b>*Tiempo Especial: 9:30am-11:30am</b>	23 South 38 <sup>th</sup> St.	Adultos
Vier	Jan 3	Nicetown CDC <b>*NUEVA UBICACION</b>	4332 Germantown Ave	Adultos & Ninos
Lun	Jan 6	Gideon Elementary School <b>*Tiempo Especial: 4:30pm-6:30pm</b>	2817 West Glenwood Ave.	Adultos & Ninos
Vier	Jan 10	Lutheran Church of the Holy Communion	2111 Sansom St. (Enter on Van Pelt)	Adultos
Lun	Jan 13	Providence Center	2557 N. 5 <sup>th</sup> St. (at Huntingdon St.)	Adultos
Mier	Jan 15	Philadelphia Episcopal Cathedral <b>*Tiempo Especial: 9:30am-11:30am</b>	23 South 38 <sup>th</sup> St.	Adultos
Lun	Jan 27	The Common Place	5736 Chester Ave. (at 58 <sup>th</sup> St.)	Adultos
Mier	Jan 29	Church of the Advocate	1801 Diamond St.	Adultos
Lun	Feb 3	Gideon Elementary School <b>*Tiempo Especial: 4:30pm-6:30pm</b>	2817 West Glenwood Ave.	Adultos & Ninos
Mier	Feb 5	United Communities Houston Center	2029 S. 8 <sup>th</sup> St. (at Snyder Ave.)	Adultos & Ninos
Lun	Feb 10	CHOP Karabots	4865 Market St.	
Vier	Feb 14	Lutheran Church of the Holy Communion	2111 Sansom St. (Enter on Van Pelt)	Adultos
Mier	Feb 19	Philadelphia Episcopal Cathedral <b>*Tiempo Especial: 9:30am-11:30am</b>	23 South 38 <sup>th</sup> St.	Adultos
Vier	Feb 21	Immanuel Resource Center/COGIC	6401 Ogontz Ave.	Adultos & Ninos
Lun	Feb 24	The Common Place	5736 Chester Ave. (at 58 <sup>th</sup> St.)	Adultos
Mier	Feb 26	Church of the Advocate	1801 Diamond St.	Adultos