

# **OVDIM B'YACHAD: WORKING TOGETHER**

---

A Resource Guide for Synagogues | 2019-2020



**Jewish Federation**  
of Greater Philadelphia

[jewishphilly.org](http://jewishphilly.org)

# TABLE OF CONTENTS

---

Mitzvah Opportunities and Social Justice Programs	4
For Teens and 20s	8
Scholarships for Jewish Life and Learning	12
Israel Programs and Grants	16
Israel Travel	20
Tools for Strengthening Our Communities	24

Dear Friends,

At the Jewish Federation of Greater Philadelphia, we are devoted to helping our communities build, grow and connect with one another. Inside this booklet are dozens of ways we can help you further engage your membership.

Whether you are looking for opportunities for congregants to volunteer together, learn together or socialize together, we can offer resources to supplement your synagogue's programming. In addition, we have included programs that can help strengthen and support your synagogue's staff and lay leadership, as well as scholarship information to help your community members achieve their Jewish life and learning goals.

We hope you are inspired by what you find here. If you have any questions at all, we urge you to call the contact person listed by your program of interest or to contact us directly at [mjohnson@jewishphilly.org](mailto:mjohnson@jewishphilly.org) or [nadler@jewishphilly.org](mailto:nadler@jewishphilly.org). We look forward to a year filled with new and creative opportunities for connection. Thank you for helping to Carry the Light of Jewish community.

Best,



Naomi Adler, Esq.  
*President & CEO*

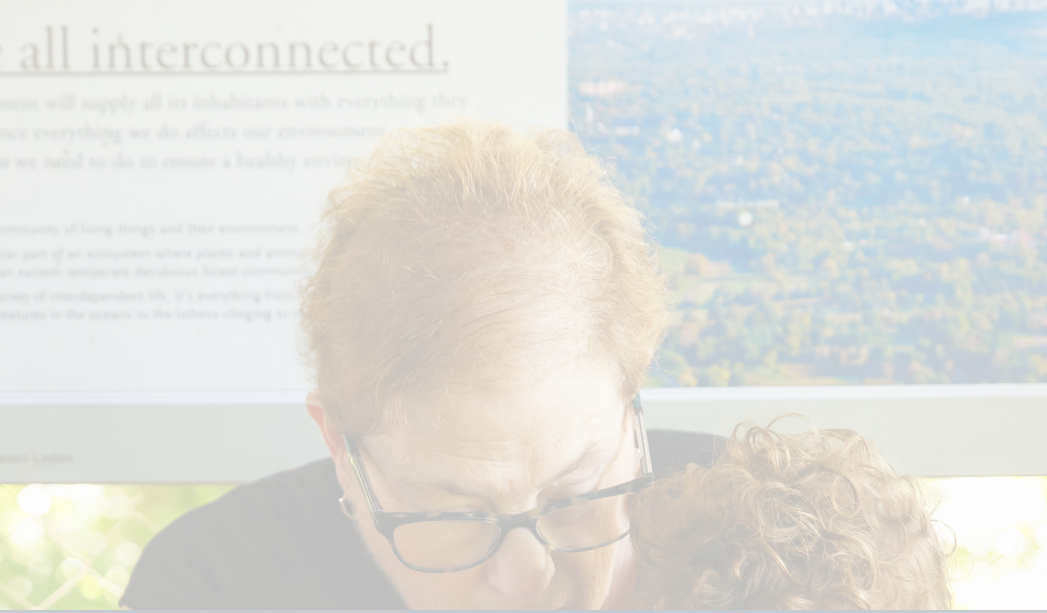


Melissa S. Johnson  
*Chief Planning and Strategy Officer*



# MITZVAH OPPORTUNITIES AND SOCIAL ACTION PROGRAMS





**MITZVAH OPPORTUNITIES  
AND SOCIAL ACTION  
PROGRAMS**



## MITZVAH OPPORTUNITIES AND SOCIAL ACTION PROGRAMS

*These programs can either be geared for general audiences or they can be adapted for a specific demographic: your sisterhood, men's club, older adults, Hebrew school or b'nai mitzvah class.*

### Advocacy Days In place Interested

Our lobbying trips to Harrisburg are an easy way to make a difference. Participants receive education about important domestic issues (past topics have included nutritional assistance, elder services, disability rights, Holocaust education and day school scholarships) and, in turn, educate legislators on issues important to our Jewish communities.

Contact Robin Schatz at [rschatz@jewishphilly.org](mailto:rschatz@jewishphilly.org) or 215.832.0654.

### Cook for a Friend In place Interested

Through this program, small groups get together to cook nourishing kosher meals for homebound older adults in the Greater Philadelphia Jewish community. This *mitzvah* opportunity is also a means for congregants to strengthen their bonds with one another as they work side by side in the warm intimacy of the kitchen.

For people ages 21-45, register at [jewishphilly.org/cookforafriend](http://jewishphilly.org/cookforafriend) or contact Andrea Cantor at [acantor@jewishphilly.org](mailto:acantor@jewishphilly.org) or 215.832.0861.

For other age groups, contact Cook for a Friend coordinator John Eskate at [jeskate@kleinlife.org](mailto:jeskate@kleinlife.org) or 215.698.7300 ext. 196.

### Disability Advocacy and Inclusion In place Interested

Every February, during Jewish Disability Awareness and Inclusion month, communities all across America join to advocate for people with disabilities and mental illness to become active participants in Jewish communal life.

To join the Philadelphia contingent heading to Capitol Hill, contact Robin Schatz at [rschatz@jewishphilly.org](mailto:rschatz@jewishphilly.org) or 215.832.0654.

### Holocaust Remembrance In place Interested

Choose from a variety of programs that teach the history and lessons of the Holocaust, so that we Never Forget. Throughout the year, our Jewish Community Relations Council facilitates conversations with survivors, impactful youth symposia and a creative arts competition; and each April, hosts an annual community-wide Yom HaShoah observance.

Contact Beth Razin at [brazin@jewishphilly.org](mailto:brazin@jewishphilly.org) or 215.832.0536.

### "Memories and Blessings" In place Interested

Learn about the Jewish values and customs around caring for the deceased through our special "Memories and Blessings" curriculum; then take part in a *chesed* project (acts of loving-kindness) by helping with cleanup at Mt. Carmel Cemetery, scheduled at your convenience.

Contact Penina Hoffnung at [phoffnung@jewishphilly.org](mailto:phoffnung@jewishphilly.org) or 215.832.0813.

### Mitzvah Food Program In place Interested

Over 11,000 Jews in our region face food insecurity, and our five food pantries throughout Greater Philadelphia offers them some relief. Congregants of all ages can get involved with our Mitzvah Food Program through donations, food drives and volunteering to pack or deliver bags of food, and utilizing the services themselves.

Contact Deirdre Mulligan at [mitzvahfoodprogram@jewishphilly.org](mailto:mitzvahfoodprogram@jewishphilly.org) or 215.832.0509.

### The Northeast NORC In place Interested

A "Naturally Occurring Retirement Community," or NORC, is a neighborhood in which many people aged 60 and above live at home, but find it increasingly hard to go about daily tasks as they age. Our Northeast NORC spans six Northeast Philly zip codes, and volunteers are key to its success. Volunteers help with winterization, spring cleaning and household chores like trips to the grocery store; they find the experience meaningful beyond the work itself.

Contact Marlene Chait at [mchait@jewishphilly.org](mailto:mchait@jewishphilly.org) or 215.320.0351.

### Super Sunday In place Interested

The Greater Philadelphia Jewish community comes together one Sunday each February to help raise vital funds to serve vulnerable populations and support Jewish life and learning. Make this a group *mitzvah* opportunity for your congregants! Join volunteers of all ages who Carry the Light by making those important phone calls to Jewish Federation supporters. This is also a great time for Hebrew School classes to donate the *tzedakah* they have been collecting.

Find more information at [jewishphilly.org/supersunday](http://jewishphilly.org/supersunday).

### Understanding Our Vulnerable Populations In place Interested

The Jewish Federation can provide speakers to discuss some of the serious social issues troubling our region and nation, including issues surrounding older adults and low-income families.

Contact Brian Gralnick at [bgralnick@jewishphilly.org](mailto:bgralnick@jewishphilly.org) or 215.832.0850.

**NOTES**

---

---

---

---

---

---

---

---

---

---

---

---

---

---

---

---

---

---

---

---

---

---

---

---

---

---



**FOR TEENS AND 20s**



NOTES

---

---

---

---

---

---

---

FOR TEENS AND 20s

---

---

---

---

---

---

---



## FOR TEENS AND 20s

### **Birthright Israel**

In place  Interested

Since its inception, Birthright Israel’s mission has been to give every young Jewish adult (ages 18-32) an opportunity to visit Israel and meet Israeli peers, with the goal of strengthening Jewish identity and participants’ connections with Israel and its people. Help give your young adults an experience of a lifetime with this 10-day free journey through both Jewish history and the contemporary Jewish state.

Contact Max Moline at [mmoline@jewishphilly.org](mailto:mmoline@jewishphilly.org) or 215.832-0803, or Bat El Trabelsi at [shlich@jewishphilly.org](mailto:shlich@jewishphilly.org) or 215.834.4130 to find out about post-college Philadelphia Birthright trips.

### **Diller Teen Fellows**

In place  Interested

This incredible experiential learning and travel experience for 10<sup>th</sup> and 11<sup>th</sup> graders aims to build the next generation of committed Jewish leaders, equipping them with the skills, confidence, knowledge and Jewish values to help create a better world. This highly subsidized 12-month program includes all workshops, retreats, seminars and a three-week trip to Israel where they meet teens like themselves from around the world.

For more information contact [teenprograms@jewishphilly.org](mailto:teenprograms@jewishphilly.org).

### **Mesiba!! (Party!!)**

In place  Interested

Every year, our *shaliach* (cultural ambassador) from Israel works with the Jewish Federation’s NextGen group (ages 21-45) and other local Jewish young professional groups to put on a rocking party for Israeli Independence Day. No membership required, just the desire to have a good time and show your interest in Israel.

Contact our *shlich* at [shlich@jewishphilly.org](mailto:shlich@jewishphilly.org) or 215.834.4130.

### **Teen Giving Project**

In place  Interested

Looking for ways to engage your 9<sup>th</sup> and 10<sup>th</sup> graders in what it means to live Jewishly? The Teen Giving Project is an eight-month long program to expand their understanding of Jewish philanthropy. They will learn fundraising, communication and decision-making skills grounded in Jewish values, culminating in the real-life challenge of raising and allocating money to a worthy cause of the group’s choosing.

Contact Trisha Swed at [tswed@jewishphilly.org](mailto:tswed@jewishphilly.org) or 215.832.0516.



For more travel opportunities, see our “Israel Travel” section, page 20.

## NOTES

---



---



---



---



---



---



---



---



---



---



---



---



---



---



---



---



---



---



---



---



---



---



NOTES

---

---

---

---

---

---

---

---

---

---

---

---

---

---

---

---

---

---

---

---

---

---

---

---



# SCHOLARSHIPS FOR JEWISH LIFE AND LEARNING



NOTES

---

---

---

---

---

---

JEWISH LIFE AND LEARNING  
SCHOLARSHIPS FOR

---

---

---

---

---

---



## SCHOLARSHIPS FOR JEWISH LIFE AND LEARNING

*Most Jewish families would qualify for reduced rates for high-quality programs. Please share this valuable information with your congregants.*

---

### Jewish Day School Scholarships

In place  Interested

The Foundation for Jewish Day Schools, created as a partnership between the Jewish Federation and area Jewish day schools, helps provide needs-based school scholarships for eligible K-12 students and their families. Utilizing Pennsylvania's Educational Improvement Tax Credit (EITC) program and, when possible, the Opportunity Scholarship Tax Credit (OSTC) program, the Foundation provides two important services: helping children receive a quality Jewish education and helping Pennsylvanians redirect their state taxes towards this worthy goal.

Contact Ellen Horowitz Matz at [ematz@jewishphilly.org](mailto:ematz@jewishphilly.org) or 215.832.0525.

### Jewish Preschool Scholarships

In place  Interested

Along with Pennsylvania's EITC program (see above), the Foundation for Jewish Day Schools helps provide need-based school scholarships for eligible pre-K programs for three to six-year-olds.

Contact Ellen Horowitz Matz at [ematz@jewishphilly.org](mailto:ematz@jewishphilly.org) or 215.832.0525.

### Jewish Summer Camp Scholarships

In place  Interested

Summer camp is a chance for kids to look at who they are, who they want to become and as importantly, a chance to explore their connection to the Jewish community - while having the summer of their lives. For some families, paying for overnight or day camp can be difficult or even impossible. That's why the Jewish Federation offers two assistance programs: one for first-time campers regardless of financial need, the other a need-based scholarship for returning campers.

Contact our Grant Coordinator at [scholarships@jewishphilly.org](mailto:scholarships@jewishphilly.org) or 215.832.0522, or visit [jewishphilly.org/camp](http://jewishphilly.org/camp).

### Jewish Supplementary School Scholarships

In place  Interested

The Keren Chinuch Scholarship Fund is a need-based scholarship for Jewish children attending nearly 50 supplementary schools at synagogues and similar programs throughout Greater Philadelphia. Funds are distributed to qualified schools based on enrollment; schools are responsible for determining need and distributing aid to the students.

Contact Abbey Frank at [afrank@jewishphilly.org](mailto:afrank@jewishphilly.org) or 215.832.0553.

## Scholarships for Higher Education

In place  Interested

Over the years the Jewish Federation has administered a number of endowed scholarships and interest-free loans to help Jewish students with financial needs achieve their higher education goals. These include funds for general graduate degrees; medical and law school; and music and cantorial students.

Contact Hannah Cofalka at [hcofalka@jewishphilly.org](mailto:hcofalka@jewishphilly.org) or at 215.832.0518.

Applications are available at [jewishphilly.org/endowed-scholarships](http://jewishphilly.org/endowed-scholarships).

## NOTES

---

---

---

---

---

---

---

---

---

---

---

---

---

---

---

---

---

---

---

---

---

---

---



# ISRAEL PROGRAMS AND GRANTS



NOTES

---

---

---

---

---

---

---

ISRAEL PROGRAMS  
AND GRANTS

---

---

---

---

---

---

---



## ISRAEL PROGRAMS AND GRANTS

---

### Having a Constructive Conversation about Israel In place Interested

In an increasingly fractured world, civil but meaningful conversations about our relationships with Israel are becoming ever-more difficult, even among Jews. The Jewish Community Relations Council, in conjunction with the Penn Project for Civic Engagement, is offering highly-subsidized workshops to help congregants dig into the challenging conversations and help restore *shalom bayit*.

Contact Rabbi Batya Glazer at [bglazer@jewishphilly.org](mailto:bglazer@jewishphilly.org) or 215.832.0651.

### Israel Education and Activism In place Interested

Looking for a better understanding of the geo-political complexities of the Middle East, the American relationship with Israel and, especially, active steps we can take to support the Jewish state? The Jewish Community Relations Council, through its relationship with the Israel Action Network (IAN), can inform your members about strategies for campuses, executive boardrooms and on Capitol Hill to combat the BDS movement and build support for Israel.

Contact Rabbi Batya Glazer at [bglazer@jewishphilly.org](mailto:bglazer@jewishphilly.org) or 215.832.0651.

### Israel Engagement Grants In place Interested

Does your synagogue have a great idea for a local project to help the larger Jewish community connect to Israel, in all its beauty and complexity? You can apply for an Israel Engagement grant up to \$5,000 for a project that promotes Israeli culture and brings artistic, educational or cultural value to the community.

Contact Addie Lewis Klein at [aklein@jewishphilly.org](mailto:aklein@jewishphilly.org) or 215.832.0828 or visit [jewishphilly.org/israel-engagement](http://jewishphilly.org/israel-engagement).

### Sessions with our *Shlichim* In place Interested

*Shlichim* (and *shlichot*) are emissaries from Israel who offer our communities personalized, Israel-focused cultural programs and workshops at little cost. Our *shlichim* can bring Israeli life and culture to your synagogue, covering everything from pop culture to politics, crafted to appeal to children, youth and adults.

Contact *shlichim* Bat El Trabelsi at [shlichim@jewishphilly.org](mailto:shlichim@jewishphilly.org) or 215.834.4130.

## NOTES

---

---

---

---

---

---

---

---

---

---

---

---

---

---

---

---

---

---

---

---

---

---

---

---

**NOTES**

---



---



---



---



---



---



---



---



---



---



---



---



---



---



---



---



---



---



---



---



---



---



**ISRAEL TRAVEL**



NOTES

---

---

---

---

---

---

ISRAEL TRAVEL

---

---

---

---

---

---





## ISRAEL TRAVEL

---

### Birthright Israel

In place  Interested

Since its inception, Birthright Israel's mission has been to give every young Jewish adult (ages 18-32) an opportunity to visit Israel and meet Israeli peers, with the goal of strengthening Jewish identity and participants' connections with Israel and its people. Help give your young adults an experience of a lifetime with this 10-day free journey through both Jewish history and the contemporary Jewish state.

Contact Max Moline at [mmoline@jewishphilly.org](mailto:mmoline@jewishphilly.org) or 215.832-0803, or Bat El Trabelsi at [shlichah@jewishphilly.org](mailto:shlichah@jewishphilly.org) or 215.834.4130 to find out about post-college Philadelphia Birthright trips.

### Israel360

In place  Interested

Israel360 is a powerful, immersive yearlong group experience for 27-40-year olds that includes a highly-subsidized 10-day trip to Israel offering a deep dive into its history, culture and politics. Participants emerge with a network of new friends; a deeper understanding of Jewish Federation's role in Philadelphia, Israel and overseas; and an even stronger Jewish identity.

Contact Max Moline at [mmoline@jewishphilly.org](mailto:mmoline@jewishphilly.org) or 215.832.0803, or visit [jewishphilly.org/israel360](http://jewishphilly.org/israel360) for information.

### Onward Israel

In place  Interested

Onward Israel is a highly subsidized travel and internship program for Jewish young adults (aged 19-27) who crave an authentic Israel experience and an opportunity to work globally. Participants live together in an Israeli urban center for seven weeks and are matched with meaningful internships in their field of interest and opportunities to explore the land, culture and people of Israel.

Contact Abby Weinberg at [onwardisrael@jewishphilly.org](mailto:onwardisrael@jewishphilly.org) or 215.832.0570.

### Israel Program Scholarships

In place  Interested

Through our need-based Israel Program Scholarship Aid Fund (IPSAF), the Jewish Federation provides scholarships to participate in educational or volunteer programs in Israel. This scholarship — for eighth grade students to adults of all ages — helps participants deepen their connection to their Jewish heritage by participating in an organized group travel and/or study experience in Israel.

Contact our Grant Coordinator at [scholarships@jewishphilly.org](mailto:scholarships@jewishphilly.org) or 215-832-0522, or apply online at [jewishphilly.org/IPSAF](http://jewishphilly.org/IPSAF).

### Travel With Purpose

In place  Interested

Our Missions department offers immersive travel opportunities that transform a trip to Israel into an experience imbued with meaning, giving participants a first-hand experience of the shared heritage, traditions and values that unite us all. Missions staff can also help if your synagogue is planning its own trip by providing information on and connections to service projects in Israel, off-the-beaten-path places in the Negev and reliable local trip providers. In addition, if you're considering a trip but need more participants, we may be able to match you with a synagogue in a similar situation.

Contact Missy Stein at [mstein@jewishphilly.org](mailto:mstein@jewishphilly.org) or 215.832.0629.

### Yeshiva Study in Israel Scholarships

In place  Interested

The Morton Stein Scholarship Fund for Orthodox Yeshivot In Israel offers needs-based financial assistance to Greater Philadelphia residents — including high school and college-age youth, young adults and teachers in Jewish settings — to attend study programs in Orthodox yeshivot in Israel.

Contact Jennifer Brier at [jbrier@jewishphilly.org](mailto:jbrier@jewishphilly.org) or 215.832.0528.

## NOTES

---

---

---

---

---

---

---

---

---

---

---

---

---

---

---

---

---

---

---

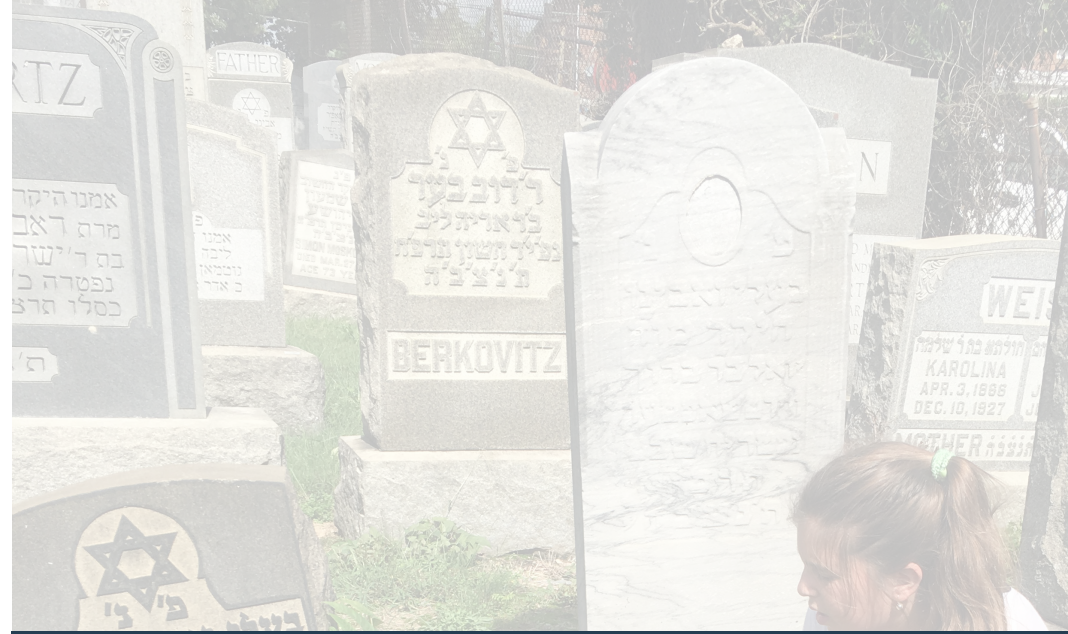
---

---

---

---

---



# TOOLS FOR STRENGTHENING OUR COMMUNITIES



NOTES

---

---

---

---

---

---

---

---

TOOLS FOR STRENGTHENING  
OUR COMMUNITIES

---

---

---

---

---

---

---

---



## TOOLS FOR STRENGTHENING OUR COMMUNITIES

### “Be in the Know” Newsletter

In place  Interested

Keep up with all the latest programs, events and offerings from the Jewish Federation by subscribing to our “Be In the Know” newsletter curated for Jewish communal professionals.

To join the e-mail list, contact Addie Lewis Klein [aklein@jewishphilly.org](mailto:aklein@jewishphilly.org) at or 215.832.0828.

### Boomer Engagement Network (“BEN”) for Jewish Singles

In place  Interested

The Baby Boomers have been called “the loneliest generation,” with a high number of people facing aging alone. The Boomer Engagement Network aims to bring together Jewish singles born between 1946 and 1964 with a range of community-building and social events.

Contact Penina Hoffnung at [BEN@Jewishphilly.org](mailto:BEN@Jewishphilly.org) or 215.832.0813.

### Dignified Burial Fund

In place  Interested

If a member of the Jewish community dies without the financial means for a Jewish burial, you may be able to help by accessing the Jewish Federation’s Dignified Burial Fund. In collaboration with our partner agency, Jewish Family and Children’s Service, we can assist families during this difficult and delicate time.

For general information contact Addie Lewis Klein at [aklein@jewishphilly.org](mailto:aklein@jewishphilly.org) or 215.832.0828. If a family member wants to request financial assistance for burial, contact Jewish Family and Children’s Service at 866.532.7669.

### Emergency Communications

In place  Interested

It’s always best to be prepared. The Jewish Federation uses a state-of-the-art emergency notification system called MIR3 to communicate with Jewish community leaders in the event of a disaster or crisis. Your synagogue’s top staff and lay leadership should register to receive these urgent and timely messages via text in the event of an emergency.

Contact Addie Lewis Klein at [aklein@jewishphilly.org](mailto:aklein@jewishphilly.org) or 215.832.0828.

### Jewish Community Relations Council (JCRC)

In place  Interested

The JCRC at the Jewish Federation is where a congregant with expertise in or passion for areas like interfaith relations, government affairs, social action and advocacy can help develop and advocate for consensus positions on a range of issues through a Jewish lens.

Contact Rabbi Batya Glazer at [bglazer@jewishphilly.org](mailto:bglazer@jewishphilly.org) or 215.832.0651.

### Jewish Information Referral Service

In place  Interested

Have questions about our Greater Philadelphia Jewish communities? Our in-house referral service can help find answers. Common questions are about financial aid to meet basic needs; camp and school scholarships; legal aid; programs for people living with disabilities; and kosher dining. In addition, the Jewish Exponent produces the annual *Guide to Jewish Greater Philadelphia* and the Jewish Federation creates our informational booklet *Resources for Stressful Times*.

Contact [info@jewishphilly.org](mailto:info@jewishphilly.org) or call the Jewish Federation at 215.830.0500.

### JPRO

In place  Interested

Help your staff’s professional growth. JPRO offers networking and professional development for those who work in the Jewish community, amplifying each of our abilities to contribute to the vitality of our communities.

Contact Penina Hoffnung at [phoffnung@jewishphilly.org](mailto:phoffnung@jewishphilly.org) or 215.832.0813.

### Kehillah (Neighborhood) Initiative

In place  Interested

Get involved with your local kehillah, a venue for partnering with other local synagogues, Jewish organizations and community volunteers on collaborative programming and enrichment for all ages.

Contact Hillel Zaremba at [hzaremba@jewishphilly.org](mailto:hzaremba@jewishphilly.org) or 215.832.0622.

### Summer Camp Concierge

In place  Interested

Invite our camp expert Abby Weinberg to speak with your congregants about why Jewish camp can be so crucial to Jewish identity-building, and the various Jewish day and overnight camps to choose from. Abby is also delighted to consult with individual parents and school directors.

Contact Abby Weinberg at or [camp@jewishphilly.org](mailto:camp@jewishphilly.org) or 215.832.0570. Information is also available at [jewishphilly.org/camp](http://jewishphilly.org/camp).

### Sustaining Your Synagogue’s Legacy

In place  Interested

Through our Create a Jewish Legacy program, the Jewish Federation helps Jewish community organizations develop legacy plans and goals to ensure a stable financial future. We provide ongoing coaching and develop long-range legacy-building strategies that assist you in approaching donors for legacy gifts to help ensure that your valuable work can continue long into the future.

Contact Ellen Sklar at [esklar@jewishphilly.org](mailto:esklar@jewishphilly.org) or 215.832.0574.

**NOTES**

---

---

---

---

---

---

---

---

---

---

---

---

---

---

---

---

---

---

---

---

---

---

---

---

---

---

---

---

---

---

**NOTES**

---

---

---

---

---

---

---

---

---

---

---

---

---

---

---

---

---

---

---

---

---

---

---

---

---

---

---

---

---

---



**Jewish Federation**  
of Greater Philadelphia

The Jewish Federation of Greater Philadelphia mobilizes financial and volunteer resources to address the communities' most critical priorities locally, in Israel and around the world.

2100 Arch Street, Philadelphia, PA 19103 | 215.832.0861  
[jewishphilly.org](http://jewishphilly.org) | @JewishPhilly